



Box Properties

--Description--

Name:

Type: Vented Box

Shape: Prism, square

--Box Parameters--

Vb = 1.98 cu.ft

V(total) = 2.317 cu.ft

Fb = 40.12 Hz

F3 = 36.1 Hz

Fill = none

--Vents--

No. of Vents = 1

Vent shape = rectangle

Vent ends = one flush

Hv = 6 in

Wv = 2 in

Lv = 8 in



--External Dimensions--

A = 14 in

B = 32 in

C = 12 in

--Internal Dimensions--

A = 12.5 in

B = 30.5 in

C = 10.5 in

--Wall Thickness--

Front = 0.75 in

Side = 0.75 in

Driver Properties

--Description--

Name: SEX 12 D4

Type: Standard one-way driver

Company: RE Audio (2015)

--Configuration--

No. of Drivers = 2

Mounting = Standard

Wiring = Parallel

Drivers sum coherently = Yes

Dual voice coils = parallel

--Driver Parameters--

Fs = 38.19 Hz

Qms = 6.107

Vas = 1.052 cu.ft [2.103]

Xmax = 1.1 in

Sd = 76.09 sq.in [152.2]

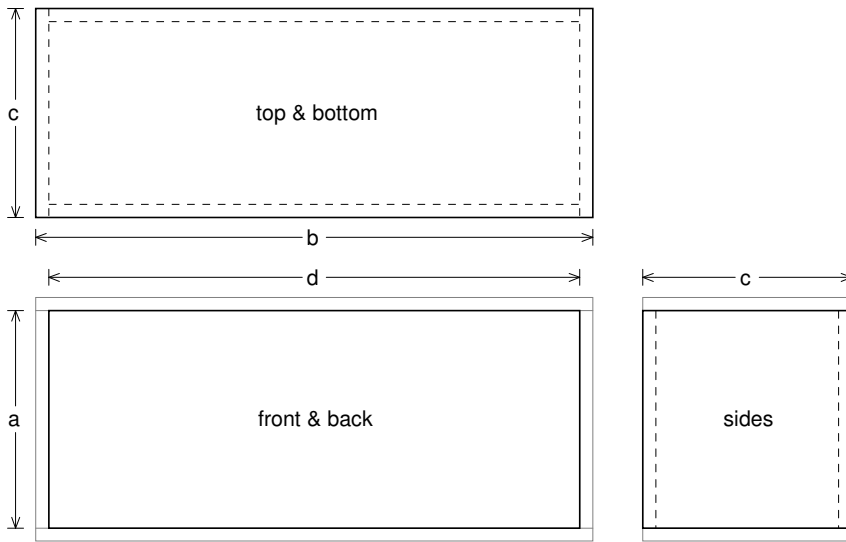
Qes = 0.781

Re = 2.021 ohms [1.01]

Le = 1.746 mH [0.873]

Z = 2.425 ohms [1.212]

Pe = 750 watts [1500]



Box Parts

Box Shape: Square Prism

- 1 Top, 1 Bottom: depth (c) = 12 in
width (b) = 32, thickness = 0.75 in
- 1 Front, 1 Back: height (a) = 12.5 in
width (d) = 30.5, thickness = 0.75 in
- 2 Sides: height (a) = 12.5 in
depth (c) = 12, thickness = 0.75 in

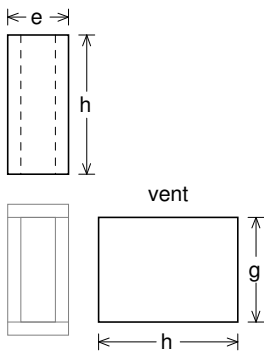
--Driver Mounting--

Mounting: Front

Aim: All drivers face same direction

--Vent Parts--

- 1 Top, 1 Bottom:
width (e) = 3.5, length (h) = 8 in
thickness = 0.75 in
- 2 Sides:
height (g) = 6, length (h) = 8 in
thickness = 0.75 in





Wiring Diagram

